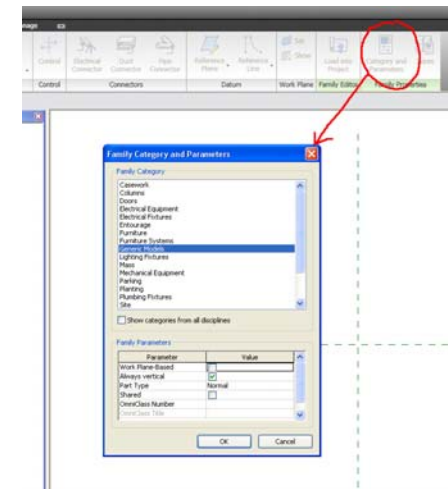
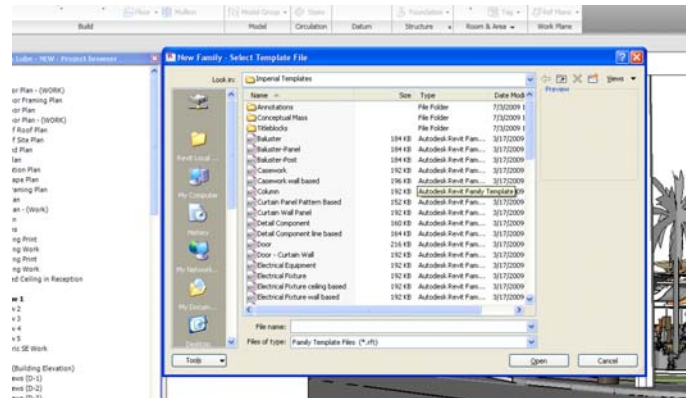
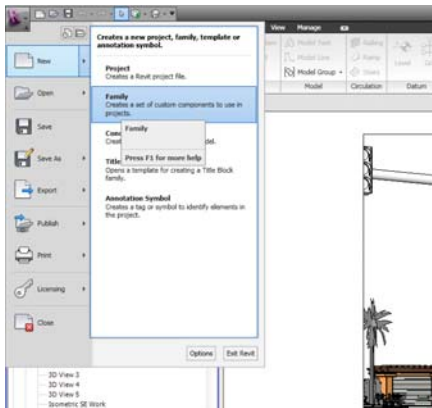


Revit Families

Set up the information

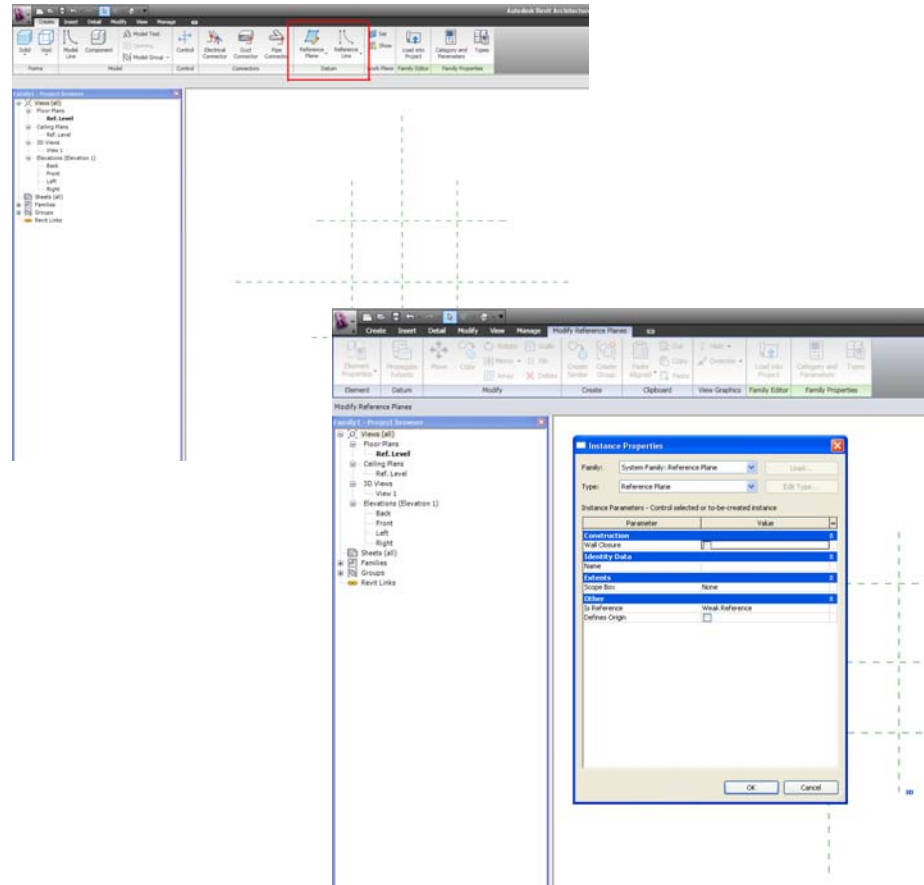
- Choose a Category (if you're not sure, it's much easier to start with "Generic")



- Choose "Family Category and Parameters" and choose the Category

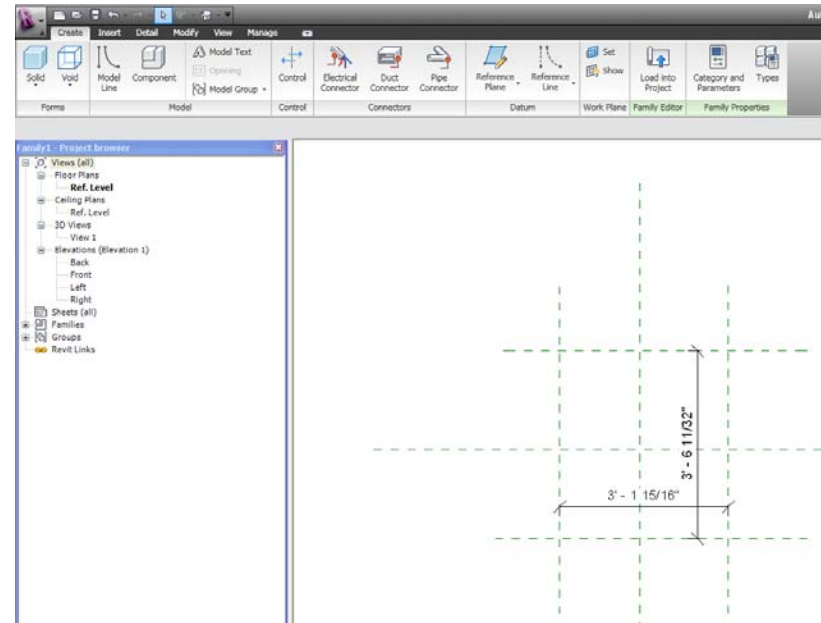
Reference Planes

- Add some Reference Planes needed (these are what control the geometry)
- Name Reference Planes that define references
 - For example:
“Center(Front/Back)”,
“Left Side”, etc.
 - Check the “Defines Origin” box for the
“Back”, “Center” and
“Bottom” Ref. Planes



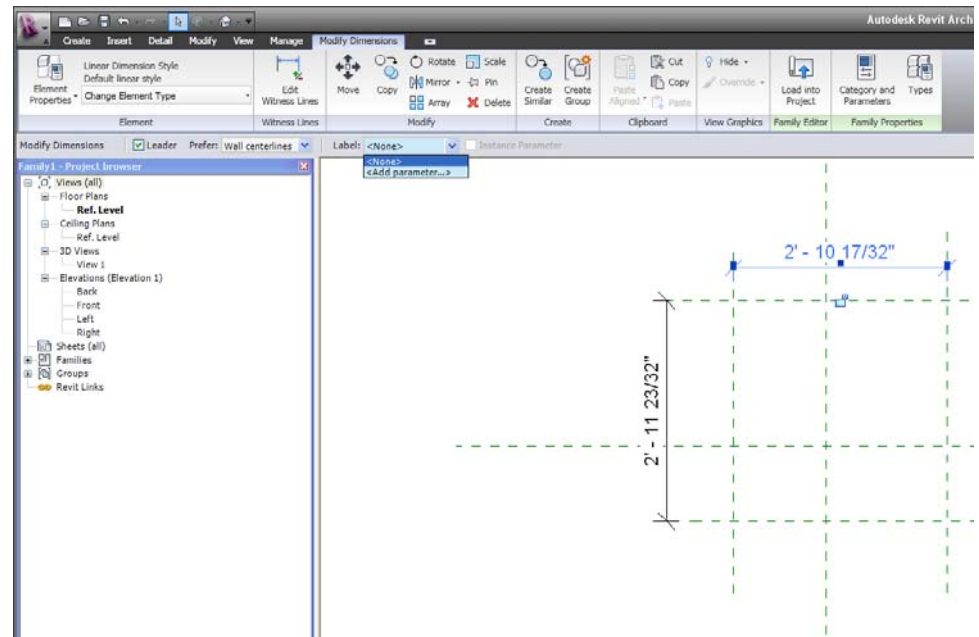
Add Dimensions

- Next, dimension all ref. planes That you need to flex:
- All Dimensions need to be one of the following:
 - Locked
 - EQ
 - Parameter
 - When dimensioning the Left-Center-Right Planes make sure that both sides are equal before using the “EQ” option



Dimension Parameters

- Click on dimension and use the pull down Label to Add Parameters
- This allows you to provide constraints to your geometry



“Family *Types*”

Add the necessary Dimension Parameters, such as: Width, Length, Height

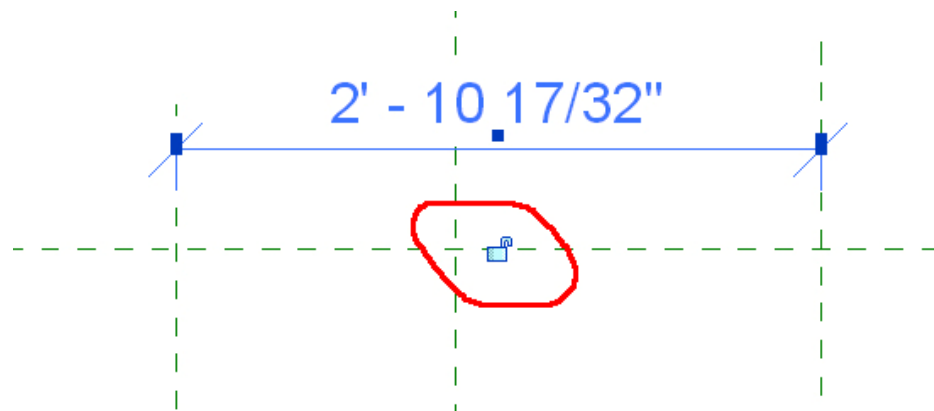
- (Depending on the category, some parameters might already be set up.)
- Make sure to set these dimension parameters under the group “Dimension”
- Make sure you determine which are “Type” or “Instance” based

Instance vs. Type

- Type
 - Ford F250 Truck
 - Ford F350 Truck
 - Ford F450 Truck
- Instance
 - Red
 - Blue
 - Short bed
 - Long bed
- Family would be the FORD

Align and Lock

- To make geometry FLEX you must LOCK it to the reference plane
- Set a locked Dimension
- Set a parameter Dimension



Create Geometry

- Using extrusions whenever possible is easiest
- Lock all sides of geometry to reference planes
- Set all geometry to the correct subcategory

Draw Linework

“Symbolic & Model Lines”

- Use “Symbolic Lines” for items such as Door Swing (only visible in current view)
- Use “Model Lines” for items such as Keyholes (seen in all views including 3D)
- Apply the “Visibility” Parameter to necessary line work
- Flex one final time to test parameters with geometry and line